



BURN

THOUGH SHE'S THE ONLY FEMALE SNAIL IN THE GROUP OF TESTOSTERONE-FUELED RACING SNAILS, BURN HAS NO TROUBLE HOLDING HER OWN. SLY AND SASSY, BURN HIDES HER SOFT SIDE UNDER A HARD OUTER SHELL.

DREAMWORKS

TURBO



WORD SEARCH

Instructions: Search forwards, backwards and diagonally to find and circle all the words!

TURBO, SPEED, RACE, TITO, WHITESHADOW, SMOOVEMOVE, BURN, SKIDMARK, WHIPLASH, SNAIL, WIN, CHET, FAST



W	T	W	C	E	K	O	G	K	B	W	N	W	E	K
O	O	U	H	H	S	W	P	F	H	V	V	E	I	K
N	T	D	R	N	P	E	M	I	P	X	I	U	R	N
R	L	I	A	B	Z	V	W	H	I	P	L	A	S	H
U	O	I	T	H	O	O	Z	K	N	R	M	T	R	H
B	L	C	N	V	S	M	L	M	I	D	E	T	P	C
S	J	D	C	V	O	E	P	C	I	H	B	J	Y	E
P	X	B	O	D	P	V	T	K	C	G	D	E	P	M
E	K	B	E	C	I	O	S	I	W	C	T	Q	R	U
E	M	F	T	I	E	O	W	I	H	D	Z	S	H	T
D	S	F	A	S	T	M	Z	D	N	W	X	H	V	Y
H	M	O	C	Y	H	S	Y	U	U	F	K	C	B	J
G	V	J	C	J	U	S	J	R	V	A	P	P	F	Q
E	C	A	R	X	V	M	E	E	H	J	Y	X	M	Y



FINISH

WIN THE RACE

START

TURBO

CAN YOU WIN THE RACE?

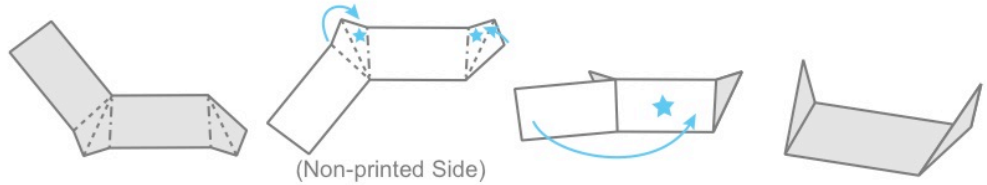
In DreamWorks' Turbo, a truck accident miraculously gives Turbo the power of super-speed. However, he may need some help winning this race. Watch out for the other Racing Snails on the track - you can only change lanes where there are gaps in the lines.

© 2013 DreamWorks Animation LLC. All Rights Reserved.

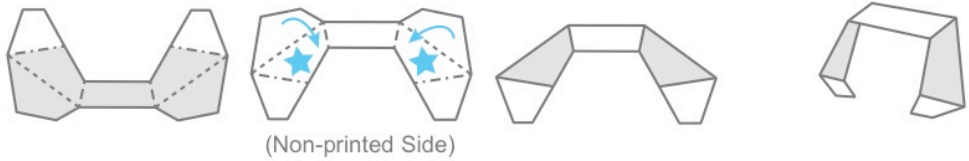
INSTRUCTIONS PAGE 2

SPOILER + MOUNT

- 1** Apply glue to the back (Non-printed Side) of the SPOILER in the triangles and fold together. Then do the same for the rectangle.

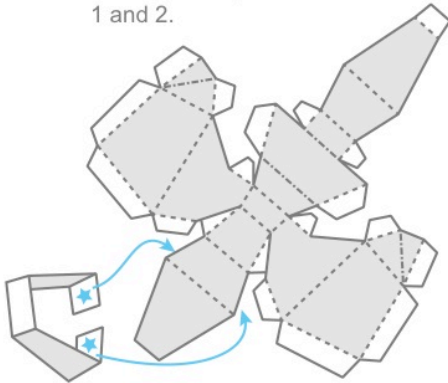


- 2** Apply glue to the back (Non-printed Side) of the SPOILER MOUNT in these spots and fold together.

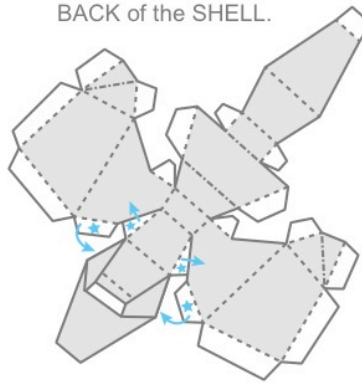


SHELL

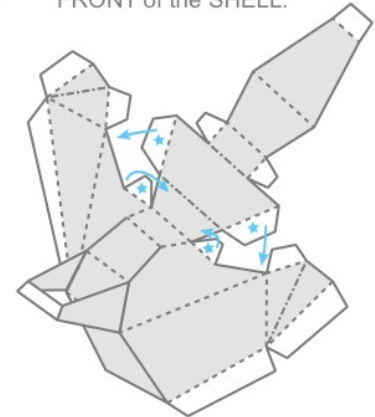
- 1** Connect SPOILER MOUNT to the SHELL piece with tabs 1 and 2.



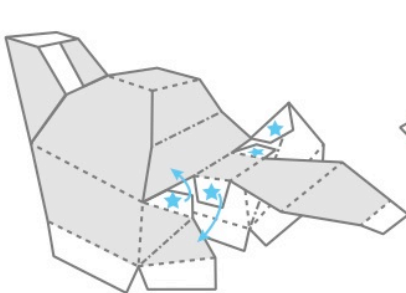
- 2** Glue tabs 3 - 8 to connect the LEFT and RIGHT SIDES to the BACK of the SHELL.



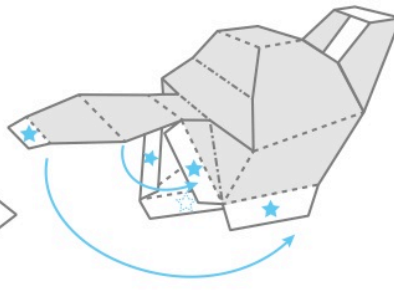
- 3** Glue tabs 9 - 12 to begin the FRONT of the SHELL.



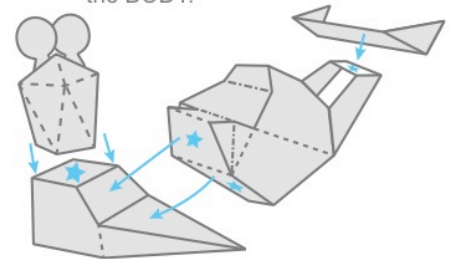
- 4** Glue tabs 13 - 16, continuing the FRONT.



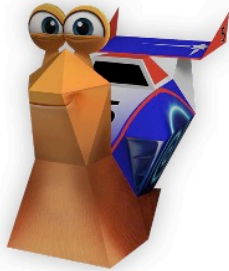
- 5** Glue tabs 17 - 21, completing the SHELL piece.



- 6** Finish TURBO by gluing the SPOILER the SHELL, and then gluing the SHELL and HEAD to the BODY.



CONGRATULATIONS
Now you have your very own
3D TURBO TOY!



1



CUT

2



SCORE

3



GLUE

GETTING STARTED

* Cut out all pieces along the solid lines. Don't forget to keep the tabs on the cutouts - you'll need them to glue pieces together.

* Fold all pieces upward or downward along score lines.

MOUNTAIN FOLD



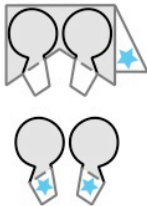
VALLEY FOLD



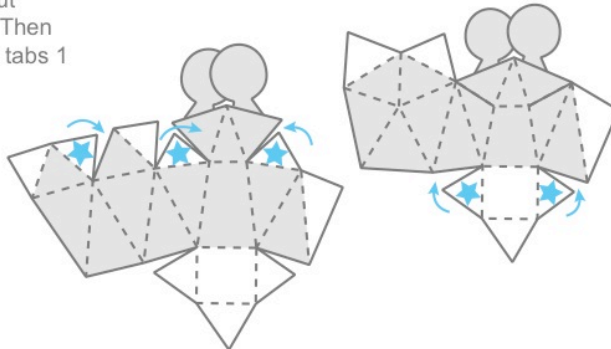
INSTRUCTIONS

EYES + HEAD

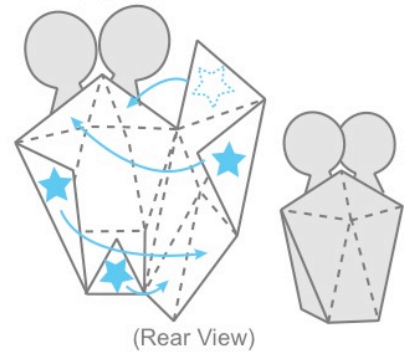
1 Fold EYES in half and glue together. Once dried, cut along solid black lines. Then glue to head piece with tabs 1 and 2.



2 Glue tabs 3 - 7. Then



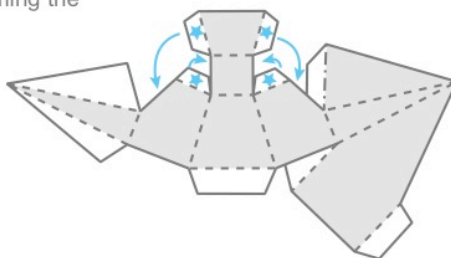
3 Close the back of the HEAD with tabs 8 - 11.



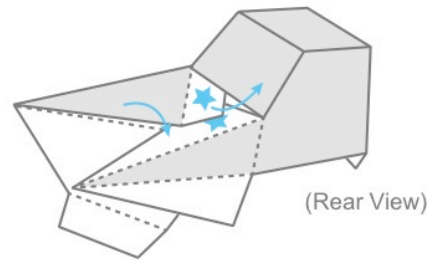
(Rear View)

BODY

1 Fold tabs 1 - 4, forming the NECK.

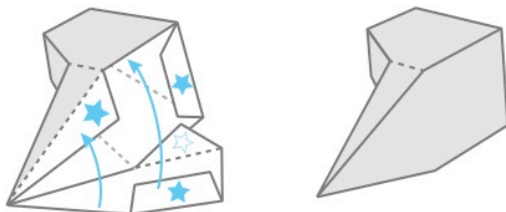


2 Glue tabs 5 and 6 to make the TAIL.



(Rear View)

3 Glue tabs 7 - 10 to close the BOTTOM.

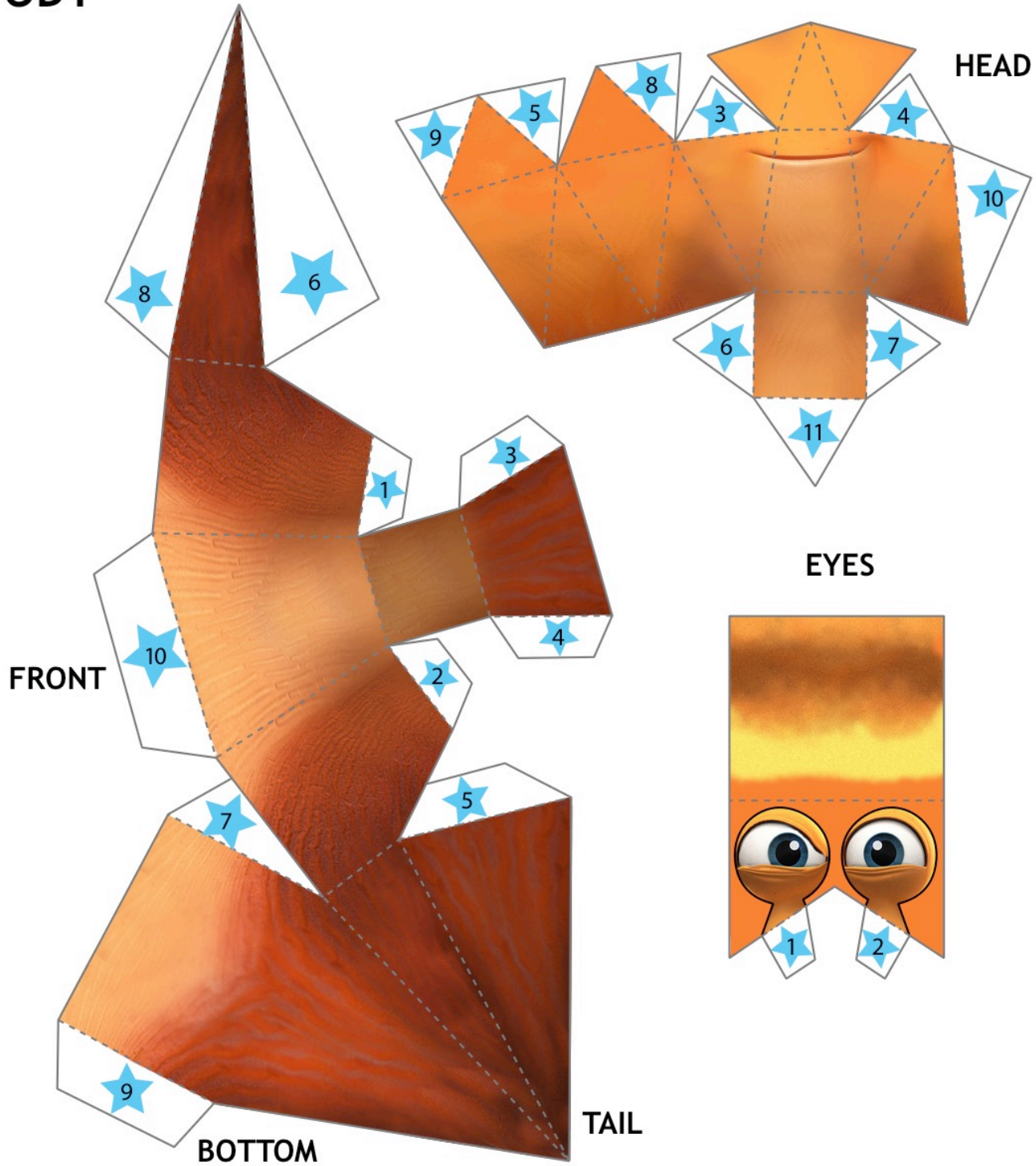


(Bottom View)

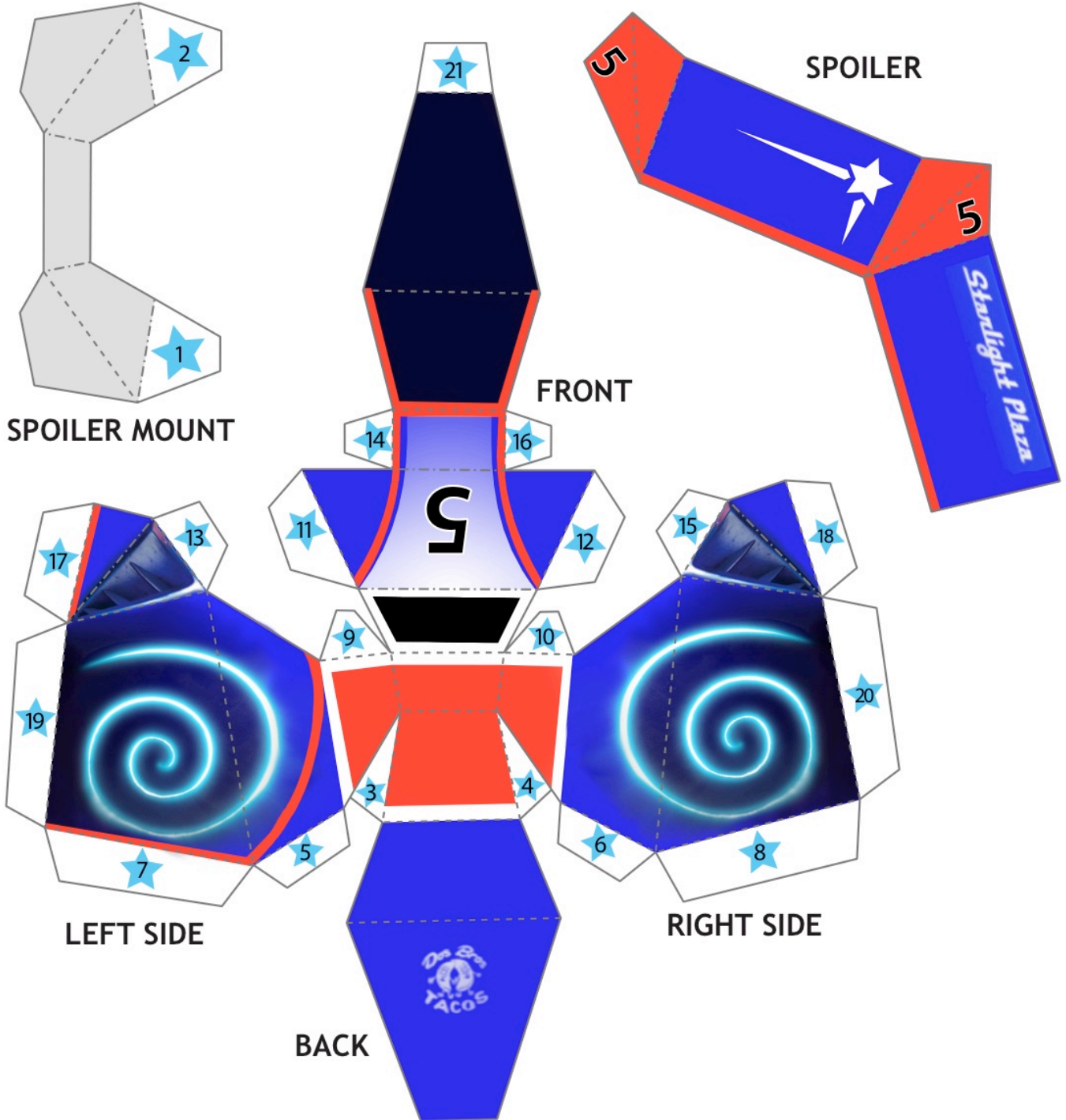
You have completed Turbo's BODY! Now lets make his SHELL.

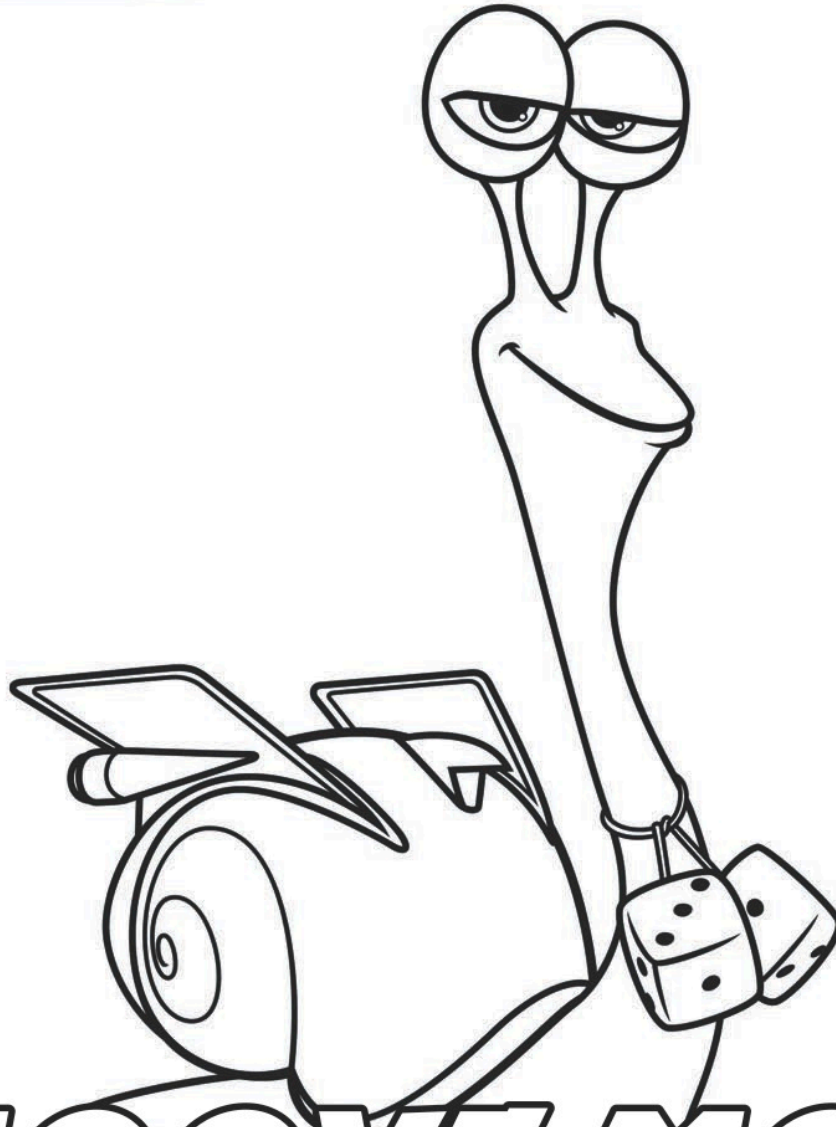
Instructions on next page...

BODY



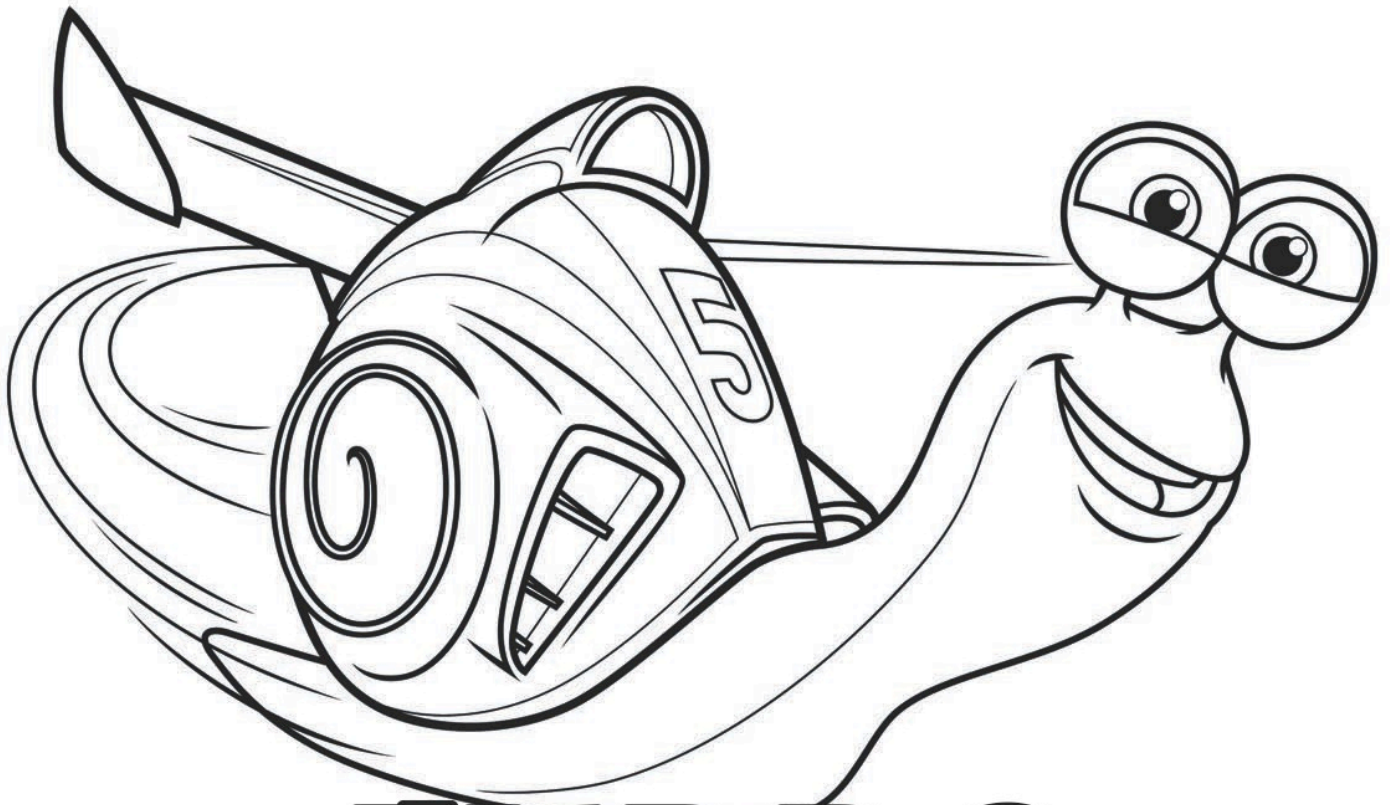
SHELL





SMOOVE-MOVE

A SUPER-COOL LOW RIDER, SMOOVE HAS A UNIQUE PERSPECTIVE ON EVEN THE CRAZIEST TWISTS AND TURNS TRIGGERED BY TURBO'S ADVENTURES.



TURBO

TURBO DREAMS OF BEING THE GREATEST RACER IN THE WORLD AND COMPETING IN THE INDY 500. HIS OBSESSION WITH SPEED HAS MADE HIM AN OUTSIDER IN THE SLOW AND CAUTIOUS SNAIL COMMUNITY. AFTER A FREAK ACCIDENT GIVES HIM INCREDIBLE SPEED, TURBO EMBARKS ON AN EXTRAORDINARY JOURNEY TO ACHIEVE THE IMPOSSIBLE.

SCRAMBLED SNAILS

SHAWHIP

CLUES

WHIPLASH
Before Turbo arrives on the scene, he was the team's leader and inspiring champion of the Racing Snails.

BURN

Though she is the only female snail in the group of testosterone-fueled racing snails, she has no trouble holding her own.

WHITE SHADOW

Full of love, brains and real laughs, this snail considers himself to be "fast, like a shadow" - ignoring the fact that shadows aren't ultimately fast.

TURBO

After a freak accident gives him remarkable speed, he embarks on an extraordinary journey to achieve the impossible.

SHIDMARK

For this snail of trash talk, no snail is successful if it doesn't end with an epic insult.

SNOOVE MOOYE

This super-cool snail-nerd has a unique perspective on even the most banal and tame indignities Turbo's adventures.

NURB

NURB

HASHDITUOM

BURTO

DARKSKIM

SMEVOOVOME

TURBO

WHAT ARE THE SNAILS' NAMES?

In DreamWorks' Turbo, an ordinary snail dares to dream big - and fast. On his extraordinary journey to achieve his racing dreams, Turbo meets the Racing Snails, but since they move so fast, their names have been all scrambled up. Can you figure out who is who from the clues?

THE TIMETABLE FOR



MONDAY

TUESDAY

WEDNESDAY

THURSDAY

FRIDAY

SATURDAY

	MONDAY	TUESDAY	WEDNESDAY	THURSDAY	FRIDAY	SATURDAY



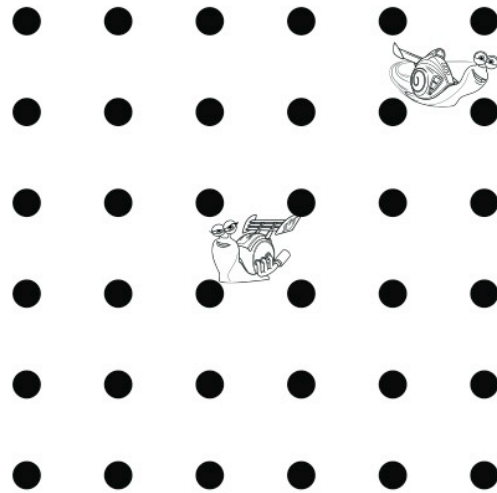
DREAMWORKS
TURBO

INSTRUCTIONS

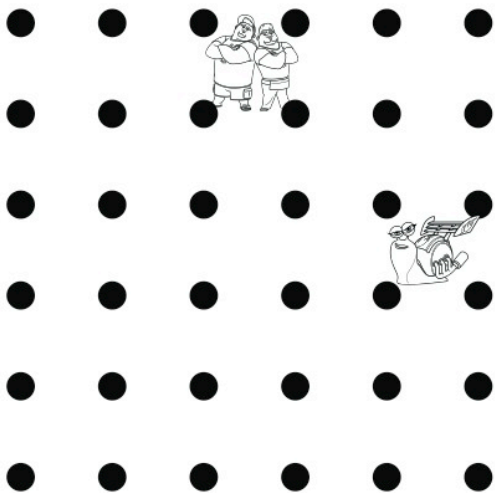
RACE TO THE MOST POINTS!! With a friend, take turns adding a single horizontal or vertical line between two adjacent dots. You earn 1 point and another turn when you complete the fourth side of a 1 x 1 box. You earn 1 extra point for completing a box with a character inside. Remember to mark your box as yours! The game ends when you can't draw any more lines. The player with the most points wins!



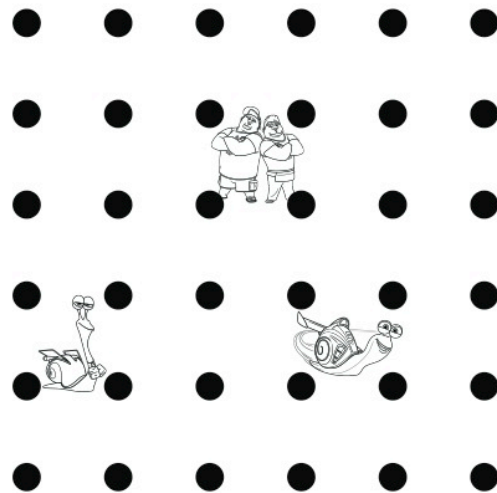
WINNER _____



WINNER _____



WINNER _____



WINNER _____



Instructions: Print this sheet out on cardstock or thick paper. Cut out your official Turbo Driver's License. Print and cut out a 2.5cm X 3cm photo of yourself and paste where it says to "Place Photo Here".

**Congratulations on earning your official Turbo Driver's License!
Take your Turbo Driver's License with you whenever you go racing!**

