

PRINTABLE GAMES FOR YOUR NEXT CAR TRIP!

ROAD GAMES



Print out these games for your next car trip.

This kit includes:

**FIND THE FAKES, SEARCH THE SCENE
RACER MATCH & CAR BINGO**

AVAILABLE ON



NOVEMBER 1

© 2011 Disney / Pixar. All rights reserved.



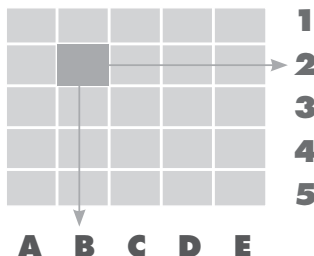


SPOT THE SCENE

Just as roadmaps use a grid system to help you find your location, see if you can map-out the scene pieces below.

STEP 1»

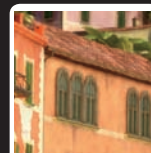
Spot each of the picture pieces in the grid below.



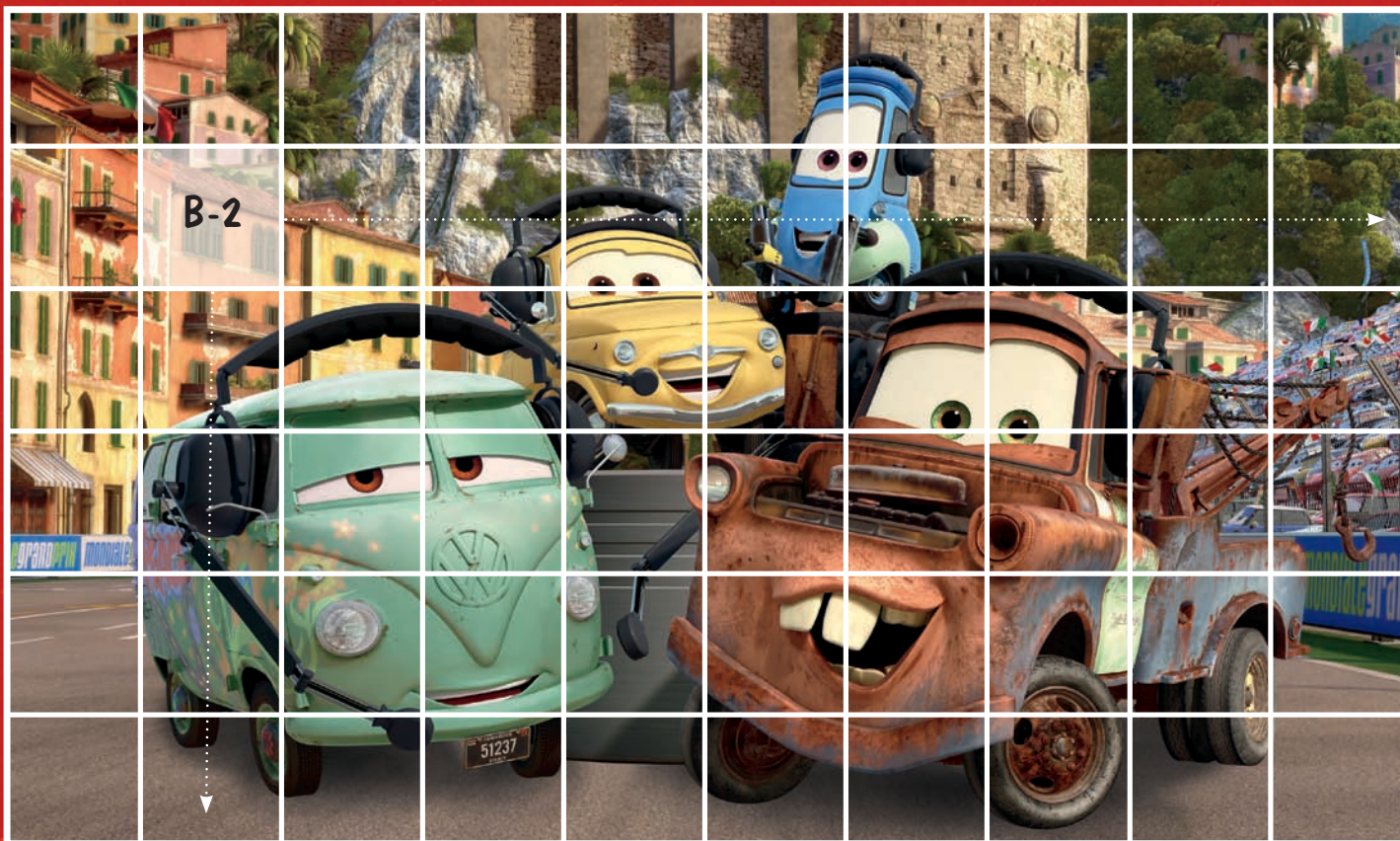
STEP 2»

Mark the location of your piece on the grid by calculating the longitude letter and the latitude number for each piece.

EXAMPLE



B-2



ANSWERS: 1) B-1 2) F-5 3) H-1 4) C-5 5) H-3 6) F-2

IMAGE 1

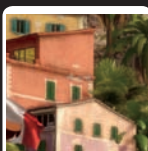


IMAGE 2

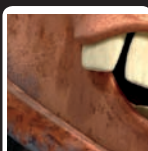


IMAGE 3

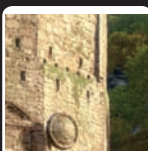


IMAGE 4

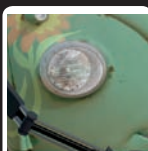
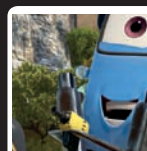


IMAGE 5



IMAGE 6



AVAILABLE ON



NOVEMBER 1



FIND THE FAKES

Four of the street signs below are not real, can you identify which ones they are? Circle your answers, then check to see if you are right!



REAL FAKE



REAL FAKE



REAL FAKE



REAL FAKE



REAL FAKE



REAL FAKE



REAL FAKE



REAL FAKE



REAL FAKE



REAL FAKE



REAL FAKE



REAL FAKE

Answers: 1- Right Way should be Wrong Way. 2- Fast Area should be Rest Area. 3- ZZ Crossing should be RR Crossing. 4- Stop light ahead sign should have a yellow light.

AVAILABLE ON



NOVEMBER 1

© 2011 Disney / Pixar. All rights reserved.





RACER MATCH



IDENTIFY THE RACERS! See if you can match each race-car with its silhouette.



Raoul ÇaRoule



Francesco Bernoulli



Shu Todoroki



Lightning McQueen



Rip Clutchgoneski



Carla Veloso



Miguel Camino



Jeff Gorvette



Nigel Gearsley



ANSWERS: 1- Carla Veloso 2- Raoul ÇaRoule 3- Francesco Bernoulli 4- Shu Todoroki 5- Jeff Gorvette 6- Miguel Camino 7- Nigel Gearsley 8- Lightning McQueen 9- Rip Clutchgoneski

AVAILABLE ON



NOVEMBER 1



CAR BINGO

How To Play:

- 1) Each person gets a different Car Bingo page (up to four may play).
- 2) While on the road look around you to find the different objects on your bingo card.
- 3) When you find a match, cross it off your card.
- 4) The first person to find five items in a row (vertically, horizontally or diagonally) calls out "BINGO" to WIN!



AVAILABLE ON



NOVEMBER 1

© 2011 Disney / Pixar. All rights reserved.





CAR BINGO

How To Play:

- 1) Each person gets a different Car Bingo page (up to four may play).
- 2) While on the road look around you to find the different objects on your bingo card.
- 3) When you find a match, cross it off your card.
- 4) The first person to find five items in a row (vertically, horizontally or diagonally) calls out "BINGO" to WIN!

SUV 	WRONG WAY 		BLUE SPORTS CAR 	SLOWER TRAFFIC KEEP RIGHT 
	DO NOT ENTER 	KEEP RIGHT 	POLICE CAR 	
	GREEN SPORTS CAR 	STOP 	NO PARKING TOW AWAY ZONE 	OLD SEDAN 
FUEL STOP AHEAD 	TOW TRUCK 	RIGHT LANE ENDS 	VW BUS 	REST AREA 
FREE SPACE 	SPEED LIMIT 65 		MACK TRUCK 	DETOUR 



AVAILABLE ON



NOVEMBER 1

© 2011 Disney / Pixar. All rights reserved.





CAR BINGO

How To Play:

- 1) Each person gets a different Car Bingo page (up to four may play).
- 2) While on the road look around you to find the different objects on your bingo card.
- 3) When you find a match, cross it off your card.
- 4) The first person to find five items in a row (vertically, horizontally or diagonally) calls out "BINGO" to WIN!

**NO
PARKING
TOW AWAY
ZONE**



**WRONG
WAY**



YIELD

**DO NOT
ENTER**



VW BUS



TOW TRUCK



OLD SEDAN



**SPEED
LIMIT
65**

**BLUE
SPORTS CAR**



**REST
AREA**

POLICE CAR



**SLOWER
TRAFFIC
KEEP RIGHT**



DETOUR

**FREE
SPACE**

**KEEP
RIGHT**



**GREEN
SPORTS CAR**



MACK TRUCK



**FUEL STOP
AHEAD**



AVAILABLE ON



NOVEMBER 1

© 2011 Disney / Pixar. All rights reserved.





CAR BINGO

How To Play:

- 1) Each person gets a different Car Bingo page (up to four may play).
- 2) While on the road look around you to find the different objects on your bingo card.
- 3) When you find a match, cross it off your card.
- 4) The first person to find five items in a row (vertically, horizontally or diagonally) calls out "BINGO" to WIN!

POLICE CAR



**SPEED
LIMIT
65**

**RIGHT
LANE
ENDS**

**DO NOT
ENTER**

**GREEN
SPORTS CAR**



YIELD

**NO
PARKING
TOW AWAY
ZONE**

SUV



**FUEL STOP
AHEAD**

VW BUS



**FREE
SPACE**

**REST
AREA**

DETOUR

**BLUE
SPORTS CAR**



**SLOWER
TRAFFIC
KEEP RIGHT**



OLD SEDAN



**KEEP
RIGHT**



TOW TRUCK



MACK TRUCK



**WRONG
WAY**



AVAILABLE ON



NOVEMBER 1

© 2011 Disney / Pixar. All rights reserved.

